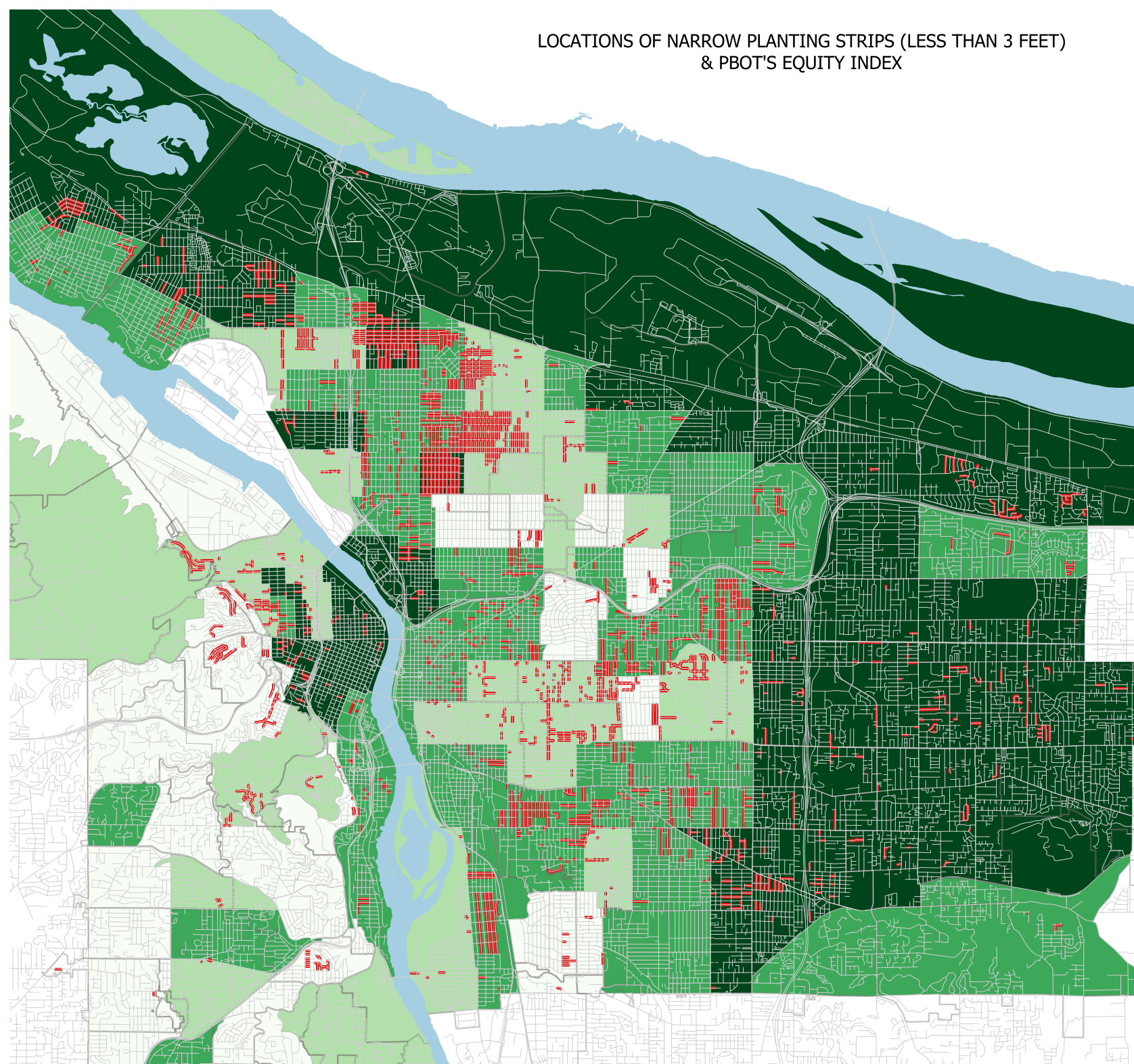


LOCATIONS OF NARROW PLANTING STRIPS (LESS THAN 3 FEET) & PBOT'S EQUITY INDEX

Portland's Bureau of Transportation Equity Index 1-10 by Census Tract (1=least disadvantaged; 10=most disadvantaged).



- Streets
- Planting strips less than 3ft
- Major_Rivers_(poly)
- Neighborhood_Boundaries
- PBOT_Equity_Index
 - 8 - 10
 - 6 - 8
 - 4 - 6
 - 2 - 4

Methodology: The City of Portland's "Trees" shapefile, which documents all of Portland's street trees, includes a field "site_width" in feet for each tree. To identify trees planted in "narrow" planting strips, a selection was made for trees with site widths of less than 3 feet and greater than zero. This selection was converted to a shapefile. To locate narrow planting strips, a 2 meter buffer was created around the trees planted in narrow planting strips. This buffer was then used to select sidewalks (City of Portland) adjacent to them. These selected features were converted to a shapefile "Planting strips less than 3ft." This shapefile is a proxy for narrow planting strips.

Caveat: Only strips where trees are present are identified.

Sources: City of Portland; Metro
Prepared by Meg Merrick, Ph.D.
10/4/2022